

PART OF N.E. 1/4 OF SEC. 14. T.5N,R.2W, S.L.B.&M. THOMPSON GARDENS SUBDIVISION

TAXING UNIT: 41

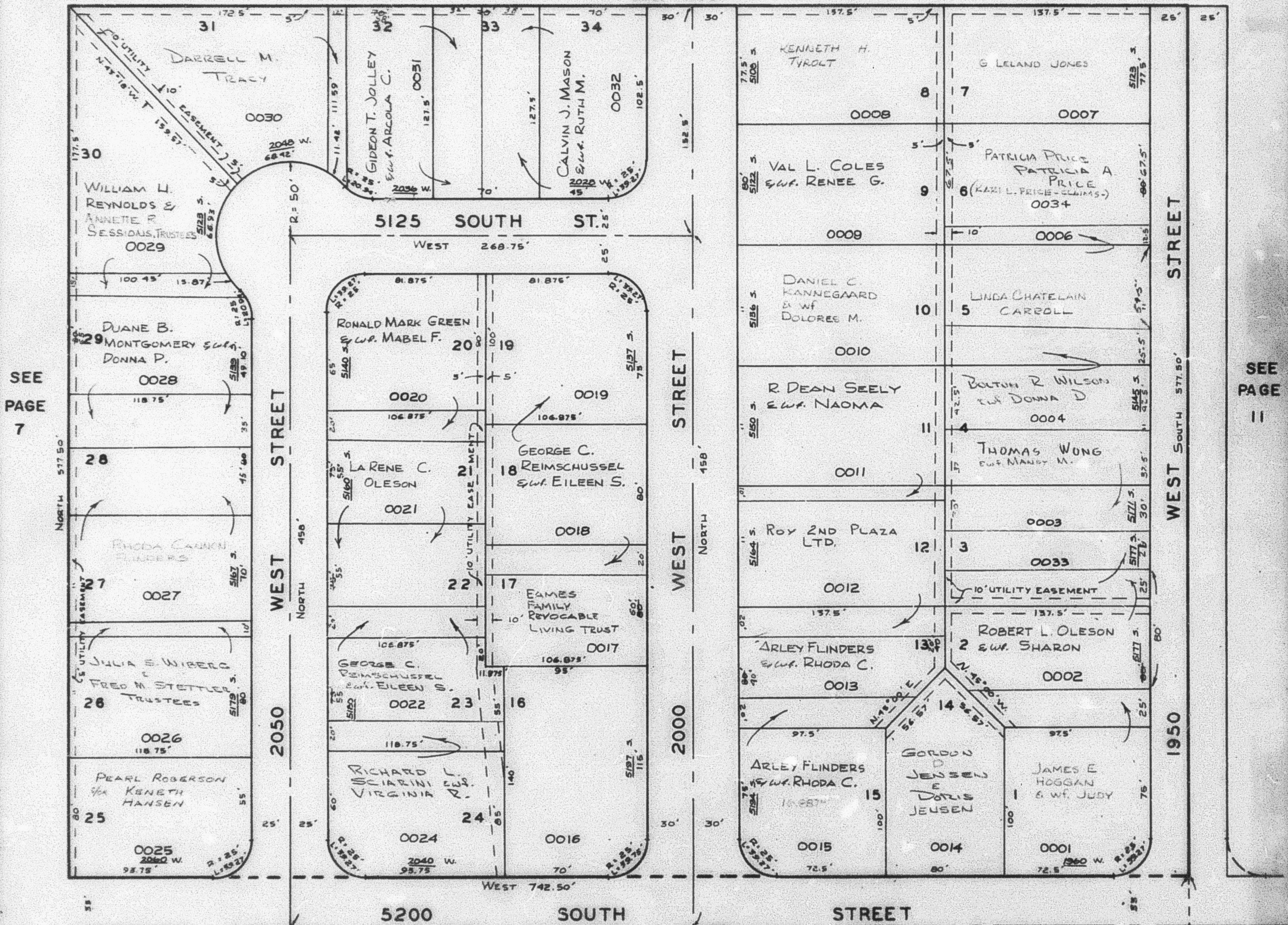
IN ROY CITY

PREFIX: 09-012

SCALE 1" = 50'

SEE PAGE II

EAST 742.5'



SEE PAGE 7

SEE PAGE II

NOTE: SEE ORDER AMENDING UTILITY EASEMENT OVER LOTS 23 & 24: 4-22-54
BOOK 442 PAGE 268

SEE PAGE 41

NOTE: SEE ORIGINAL PLAT IN BOOK 10 P. 28, FOR COMPLETE ENG. DATA.

SEE PAGE 40

SE. COR. OF N.E. 1/4 OF SEC. 14, T.5N, R.2W.

W.F.J. 6-59